



A Real-World Bridge Between Education and Employment



One Goal. Many Hands.

Employment Inclusivity's goal, by Mentor it Forward, is to increase real employment outcomes by connecting education, business, and community. We bring the parts together, and make sure individuals are equipped with the training, experience, and support they need to thrive in the workforce.

Educators prepare. Employers open doors. MiF builds the bridge and keeps it strong.

The Problem

- ⊗ Degrees open doors, but they don't walk graduates through them.
- ⊗ Employers want "work-ready" people, but graduates often aren't there yet.
- ⊗ Students often lack experience, confidence, and real-world context.
- ⊗ Education and employment operate in parallel, but rarely meet at the right point.

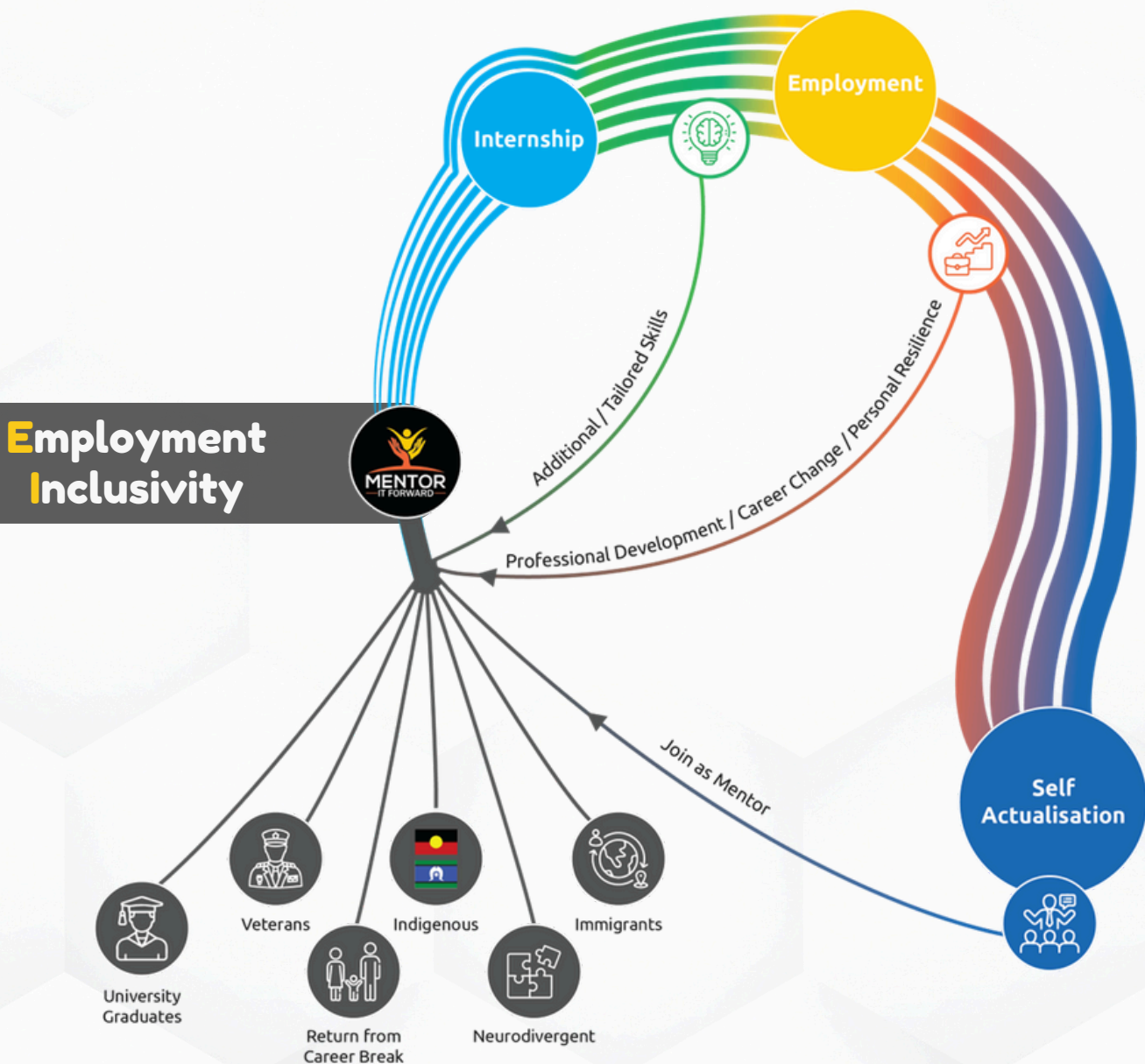
The Solution

- ✔ Early training in soft skills, problem solving, and workplace mindset.
- ✔ Industry-led mentoring and practical exposure, while still studying.
- ✔ A growing network of employers offering internships and entry roles.
- ✔ Real collaboration between education and businesses, with MiF as the facilitator.

Mentor it Forward Phased-Approach

MiF's phased approach reflects the real-life journey many aspiring professionals experience as they work to build their careers. From the classroom to the workplace, the journey is rarely straightforward, and too often, the steps in between are disconnected. MiF works with educational institutions on one side (**Phase 1**), preparing students and job seekers with the foundational skills, confidence, and guidance they need, while simultaneously engaging the business ecosystem on the other (**Phases 2 and 3**), curating pathways, internships, and employment opportunities.

MiF connects the dots, building an inclusive, structured bridge from education to employment.



Join Mentor it Forward as a Member

Phase 1 is where the journey begins, and where your organisation can take a stand. By becoming a member, you're joining a national effort to bridge the gap between education and employment.

MiF will prepare students and job seekers with the skills, confidence, and connections they need to thrive, while amplifying your institution's role as a leader committed to social impact, inclusivity, and a stronger business ecosystem.

The Ecosystem at Work: Where Do You Fit In?

EDUCATION PARTNERS

Standard Inclusions:

- Soft-skills and work-readiness workshops
- Access to specialised Internship & Employment Fairs
- Recruitment advisory workshops
- Access to the MiF exclusive Job Board for internship and employment opportunities



PARTICIPANTS / STUDENTS

- Training led by industry professionals
- Participation in simulations and networking
- 1:1 mentoring with experienced professionals
- Formal certification
- Pathways to internship and employment opportunities

BUSINESSES / EMPLOYERS

Standard Inclusions:

- Branding in events, digital and printed materials
- Access to mentor-vetted talent pool
- Opportunities to mentor and build talent pipeline
- Access to employment board
- ESG and DEI training and branding

MENTOR IT FORWARD

- Builds and facilitates the E.I program
- Centralised coordination of all parties
- Quality control and performance measurement
- Delivers workshops and training
- Organising networking events
- Maintains platforms, resources, and support

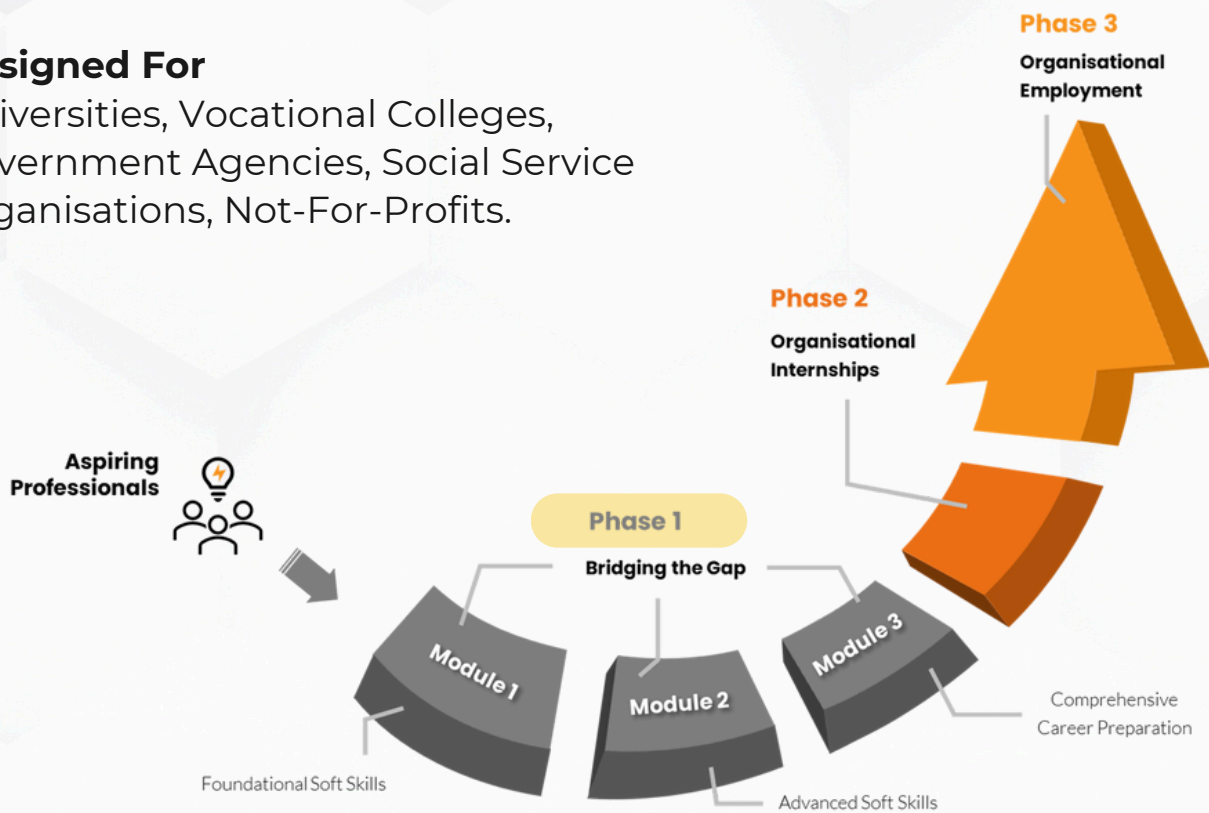
** For a full breakdown of program details, roles, and benefits, please refer to the Membership Guide.*



Membership Tiers (Phase 1)

Designed For

Universities, Vocational Colleges,
Government Agencies, Social Service
Organisations, Not-For-Profits.



Essential

Standard Inclusions, plus:

Selection of 4 workshops
(Module 1)

- ✓ Communications
- ✓ Teamwork
- ✓ Problem-Solving
- ✓ Time Management
- ✓ Leadership
- ✓ Cultural Sensitivity

Enhanced

Essential tier, plus:

Selection of additional 4 workshops
(Module 2)

- ✓ Diversity, Equity, Inclusion
- ✓ Entrepreneurial Approach
- ✓ Conflict Resolution
- ✓ Negotiation Skills
- ✓ Personal Branding
- ✓ Networking
- ✓ AI Tools

Mastery

Enhanced tier, plus:

(Module 3)

- ✓ 1-on-1 Mentoring
- ✓ Specialised Internship Fair
- ✓ Recruitment Advisory
Workshop
- ✓ Speed Networking Event

The modules' content is a curated selection of workshop topics, with more available on request.

Our program is modular and adaptable, with the flexibility to tailor content to your organisation's needs and priorities. Each topic represents a focused session; additional or follow-up workshops can be delivered to extend learning as needed.