



# A Real-World Bridge Between Education and Employment



## One Goal. Many Hands.

**Employment Inclusivity's** goal, by Mentor it Forward, is to increase real employment outcomes by connecting education, business, and community. We bring the parts together, and make sure individuals are equipped with the training, experience, and support they need to thrive in the workforce.

Educators prepare. Employers open doors. MiF builds the bridge and keeps it strong.

### The Problem

- ⊗ Degrees open doors, but they don't walk graduates through them.
- ⊗ Employers want "work-ready" people, but graduates often aren't there yet.
- ⊗ Students often lack experience, confidence, and real-world context.
- ⊗ Education and employment operate in parallel, but rarely meet at the right point.

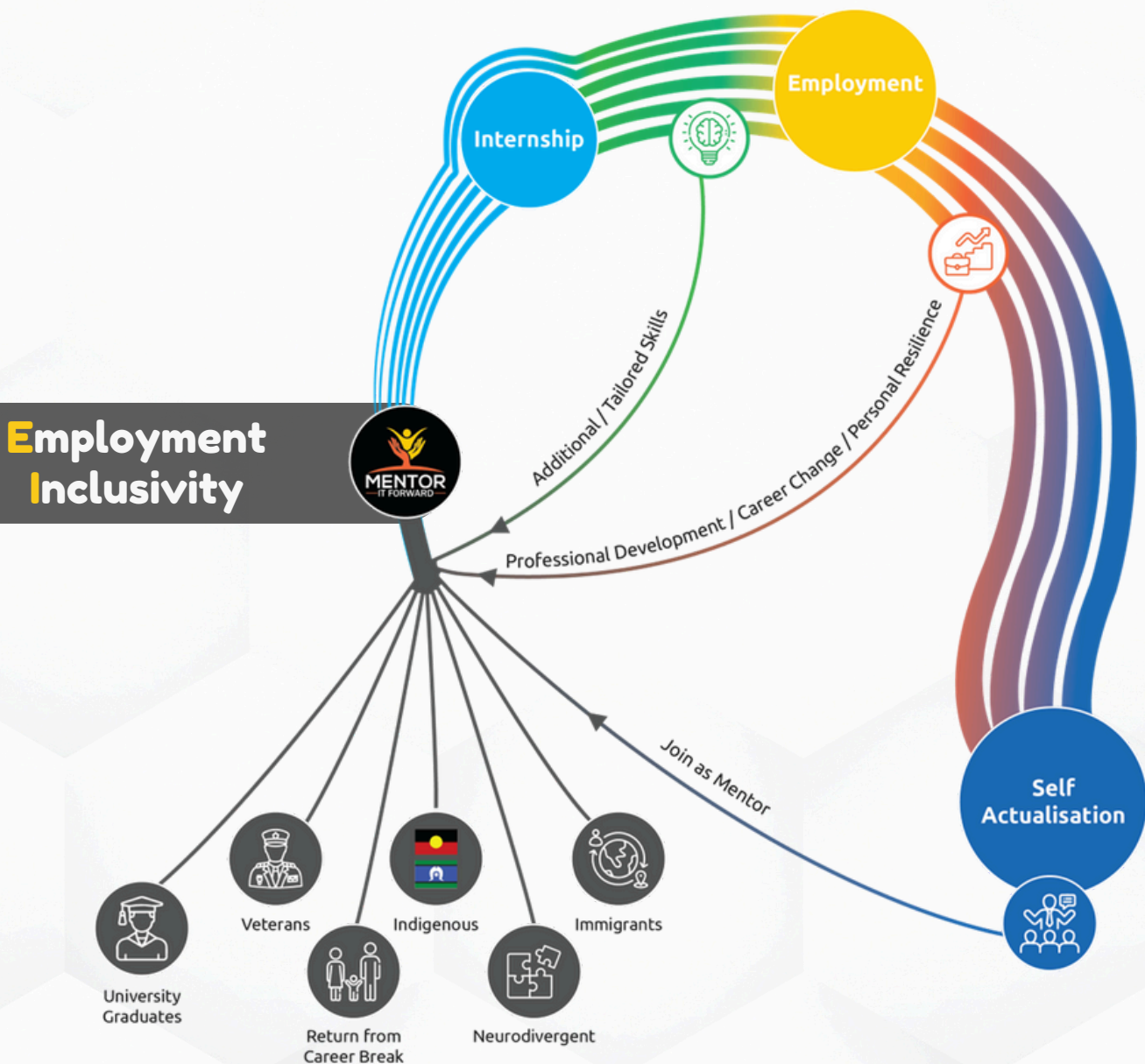
### The Solution

- ✔ Early training in soft skills, problem solving, and workplace mindset.
- ✔ Industry-led mentoring and practical exposure, while still studying.
- ✔ A growing network of employers offering internships and entry roles.
- ✔ Real collaboration between education and businesses, with MiF as the facilitator.

# Mentor it Forward Phased-Approach

MiF's phased approach reflects the real-life journey many aspiring professionals experience as they work to build their careers. From the classroom to the workplace, the journey is rarely straightforward, and too often, the steps in between are disconnected. MiF works with educational institutions on one side (**Phase 1**), preparing students and job seekers with the foundational skills, confidence, and guidance they need, while simultaneously engaging the business ecosystem on the other (**Phases 2 and 3**), curating pathways, internships, and employment opportunities.

MiF connects the dots, building an inclusive, structured bridge from education to employment.



# Join Mentor it Forward as a Member

**Phases 2 & 3** are where the journey continues, and where your organisation steps in.

By partnering with MiF, you become part of a growing movement to turn potential into opportunity.

Together, we create meaningful pathways through internships, employment, and professional development, helping job-ready individuals make the leap into the workforce with confidence.

Your involvement strengthens individual futures and the broader ecosystem, positioning your organisation as a champion of inclusive growth, emerging talent, and long-term impact.

## The Ecosystem at Work: Where Do You Fit In?

### EDUCATION PARTNERS

#### Standard Inclusions:

- Soft-skills and work-readiness workshops
- Access to specialised Internship & Employment Fairs
- Recruitment advisory workshops
- Access to the MiF exclusive Job Board for internship and employment opportunities

### PARTICIPANTS / STUDENTS

- Training led by industry professionals
- Participation in simulations and networking
- 1:1 mentoring with experienced professionals
- Formal certification
- Pathways to internship and employment opportunities

### BUSINESSES / EMPLOYERS

#### Standard Inclusions:

- Builds and facilitates the E.I program
- Centralised coordination of all parties
- Quality control and performance measurement
- Delivers workshops and training
- Organising networking events
- Maintains platforms, resources, and support



### MENTOR IT FORWARD

- Builds and facilitates the E.I program
- Centralised coordination of all parties
- Quality control and performance measurement
- Delivers workshops and training
- Organising networking events
- Maintains platforms, resources, and support

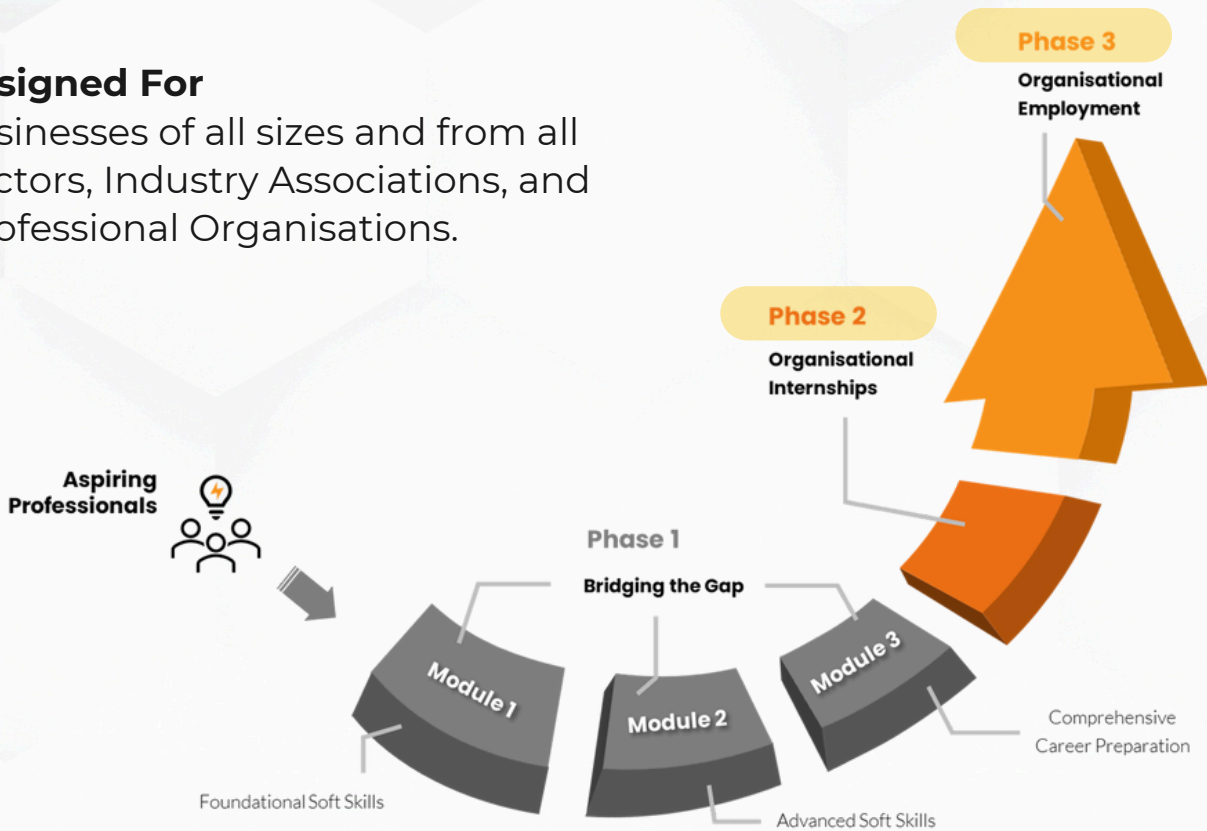
*\* For a full breakdown of program details, roles, and benefits, please refer to the Membership Guide.*



# Membership Tiers (Phases 2-3)

## Designed For

Businesses of all sizes and from all sectors, Industry Associations, and Professional Organisations.



## Supporter

Join the movement and take your first step in shaping inclusive careers.

- ✓ Visibility in program materials
- ✓ Guest access to events and career fairs
- ✓ Access to MiF's mentor-vetted talent pool
- ✓ Opportunity to mentor emerging professionals
- ✓ ESG & DEI recognition

## Partner

Engage deeper. Gain visibility and shape the journey hands-on.

Supporter tier, plus:

- ✓ Enhanced brand presence across MiF platforms
- ✓ Featured presence at internship & networking fairs
- ✓ Access to insights, data, and expanded job board
- ✓ Participation in tailored employability workshops
- ✓ ESG & DEI training and collaboration

## Leader

Step up as a changemaker. Influence outcomes and shape futures.

Partner tier, plus:

- ✓ Premier branding and media features
- ✓ VIP speaking, interview, or podcast opportunities
- ✓ Invitations to exclusive impact events
- ✓ Full access to premium recruitment tools
- ✓ Strategic ESG & DEI advisory and reporting

